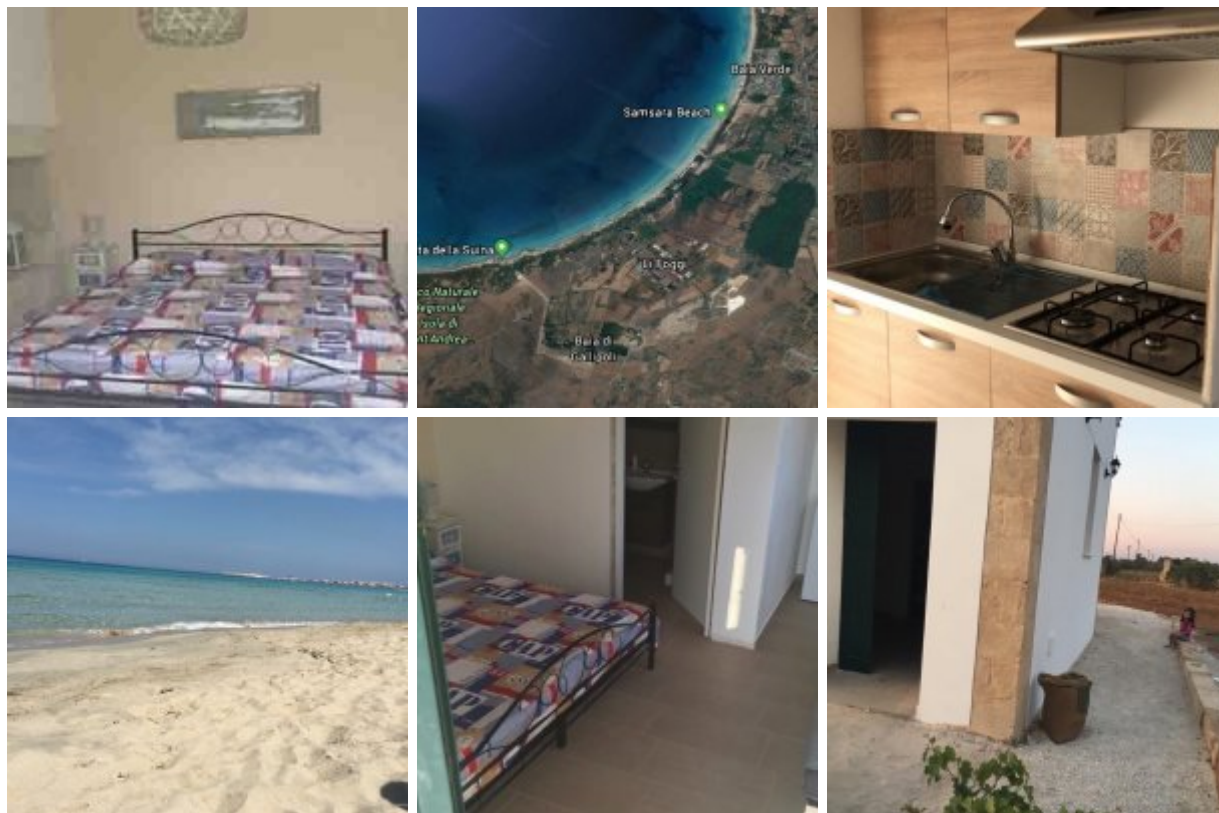


GALLIPOLI MONOLOCALE 5 km FROM THE BEACHES

Summary

Il monocale è situato su SP289 Taviano-Gallipoli immerso nelle campagne del Salento.



Description

The studio consists of a double bed, a sofa bed and a half, kitchenette, TV, climate, bathroom and large garden with gazebo to relax and enjoy nature.

Map

Address: SP289 Taviano-Gallipoli

Zip/Postal Code: 73057

Latitude / Longitude: 40.05556 / 17.97639

Image type unknown

<http://maps.google.com/maps/api/staticmap?center=40.05556,17.97639&zoom=7&markers=40.05556,17.97639&size=500x300&sensor=false>



City center	Taviano	700 meters
Nearest nightclub	VILLAGE PICADOR	1 km
Nearest airport	Brindisi	100 km

The nearest hospital	GALLIPOLI	10 km
Nearest restaurant	PIZZERIA RISTORANTE SANTA LUCIA	500 meters
Nearest beach	LIDO PUNTA DELLA SUINA	5 km
Nearest train station	Taviano	2 km

Directions

Aeroporto di Brindisi, Bari. Stazione di Lecce

Accommodation, facilities, utilities

Holiday home

Bedroom(s): 1 (3 Sleeps)

Nr.Rooms Double: 1, Sofa bed: 1

Bathroom(s): 1

Bidet: 1, Showers: 1, Wash basins: 1

Suitability

- **Long term rentals:** No
- **Pets:** Yes, pets welcome
- **Smoke:** Yes, smokers welcome
- **Children:** Yes, great for kids
- **Wheelchair:** Yes
- **Elderly or infirm:** Yes

Holiday type

Family

View

Green

General facilities

conditioned air, Non-smoking, ideal for children, Separate entrance, New property (-5 years), Private parking

Indoor facilities

Tile floor, Television, Porch

Outdoor facilities

Pets are allowed, only small size, Garden, Lawn

Services

Towels provided, Linein provided, Cleaning inclusive

Access

Private car park

Activities

Local activities:

Walking

Rates

-	Nightly rate		Weekly	Monthly	Min. Stay	Change-over
	Week	Weekend				
Rate summary	€25 - €65		€150 - €450	-	5 Nights	-
No rates available						

Policies

Check in: 12:00, **Check out:** 09:00

Il monocale sarà disponibile dalle ore 12:00 , il check out è previsto entro e non oltre le ore 9:00

